

# PRODUCT INFORMATION SHEET

## B305 Automatic Preform Gauge



www.torus-group.com/measurement

# Preform Inspection

**NEW**

New for 2016, the B305 Preform Gauge. Here at Torus Measurement Systems the favourite part of our job is bringing customer concepts to life. By listening to our customers we are developing the NEW B305 Automatic Preform Gauge. Available with a range of modular measurement & inspection stations to suit customer requirements.



### Features

- High speed through-put, designed to run 24 hours a day 7 days a week
- Hopper feed for easy loading
- Reporting – flexible data output capability for Statistical Process Control (SPC)
- Traceability and certification to UKAS standards
- Utilises powerful windows based software, GaugeXplorer
- CE Certified
- Automatically recognises preform neck features for measurement and removes operator setup error
- Up to 32 selectable rotational measurement positions with no effect on cycle time
- Tailor the machine to suit your production by selecting the necessary stations/modules

### Standard Measurement Features

- |  |   |
|--|---|
| <input checked="" type="checkbox"/> Neck Dimensions<br>Z,M,B,A,E,X,H,D,J,L,P,S,F,G,T | <input checked="" type="checkbox"/> Internal Diameter |
| <input checked="" type="checkbox"/> Body Diameter                                    | <input checked="" type="checkbox"/> Gate Height       |
| <input checked="" type="checkbox"/> Overall Height                                   | <input checked="" type="checkbox"/> Weight            |

### Standard Attribute Checks

- |   |   |
|---|---|
| <input checked="" type="checkbox"/> Gate Stringing                      | <input checked="" type="checkbox"/> Gate Burning & Roughness  |
| <input checked="" type="checkbox"/> Sinkage                             | <input checked="" type="checkbox"/> Short Shots   |
| <input checked="" type="checkbox"/> Support Ledge Roundness/Deformation | <input checked="" type="checkbox"/> Sidewall Spots or Imperfections   |
| <input checked="" type="checkbox"/> Gate Tearing and Gate Void          | <input checked="" type="checkbox"/> Polarised Preform Image<br>(displayed and recorded for operator evaluation) |

### Standard Recognition

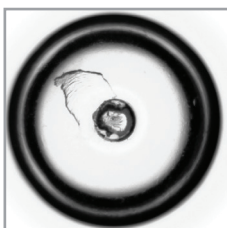
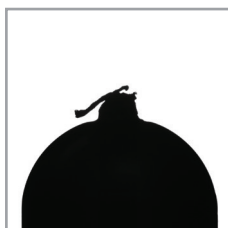
- Cavity ID

# PRODUCT INFORMATION SHEET

## B305 Automatic Preform Gauge

### Selectable Stations/ Modules

- Cavity ID Recognition Station, automatically finds and identifies the cavity ID of the preform, enabling traceable measurement and attribute checks, not limited to pre-defined fonts
- Gate & Seal Inspection Station inspects the preforms for Roughness, Burning, Tearing and Voids
- Measurement Station carries out high accuracy dimensional measurements of the preform neck, body and overall height
- Body Inspection Station checks the preform body for scratches, contamination and imperfections
- Weigh Station provides traceable preform weight measurement
- Polarization Station enables 360° inspection of the preform subjected to polarised light to detect defects not typically visible to the operator



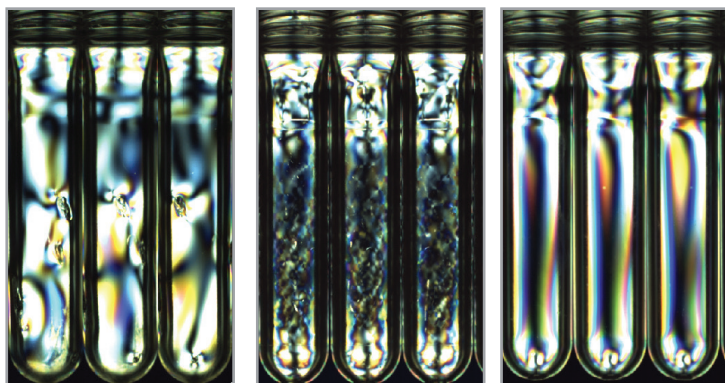
Gate and Seal Inspection



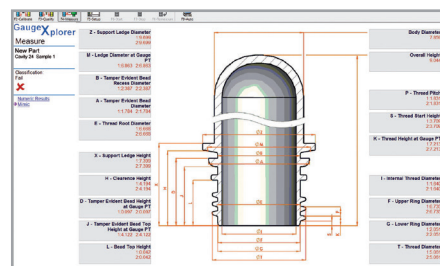
Body Inspection Station



Cavity ID Station



Polarized Light Station



Measurement Station

### Technical Specification

|                            |                         |
|----------------------------|-------------------------|
| Colour                     | Evaluation upon enquiry |
| Preform Height Range       | Up to 165mm             |
| Body Diameter Range        | Up to 40mm              |
| Neck Finish Diameter Range | Up to 40mm              |
| Rotational Positions       | 2, 4, 8, 16, 32         |
| Weight Range               | Up to 150g              |



#### Torus Measurement Systems Limited

Nedge Hill Science Park, Telford  
 Shropshire, TF3 3AJ United Kingdom  
 Tel: 44 (0) 1952 210020  
 Fax: 44 (0) 1952 299804  
 Email: tms.sales@torus-group.com

#### Torus Americas, Inc.

700 Corporate Circle, Suite M  
 Golden, Colorado, 80401, USA  
 Tel: 1-303-384-0279  
 Fax: 1-303-279-7551  
 Email: tai.sales@torus-group.com